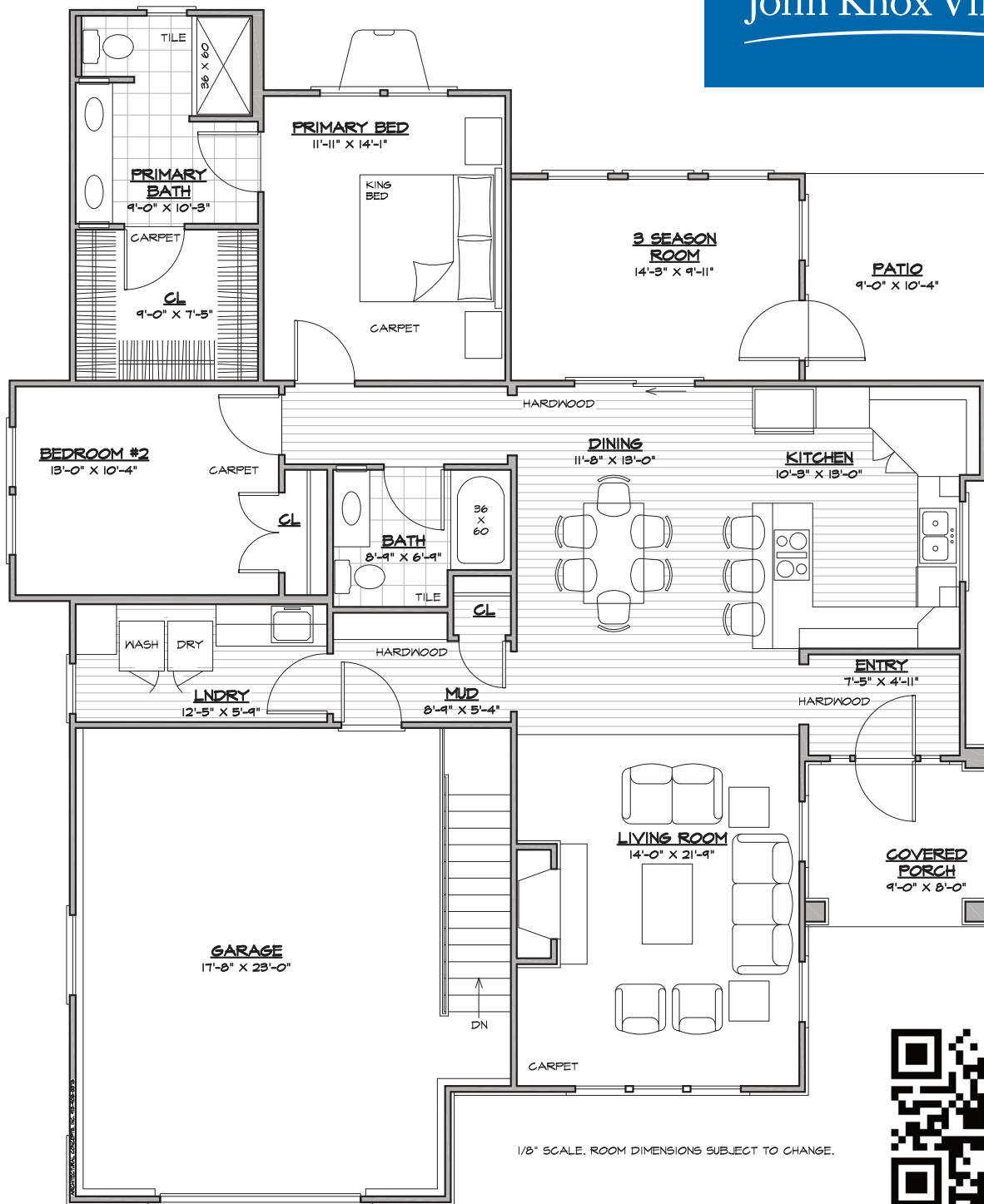


■ 1909 N.W. Killarney Lane

1,438 Sq. Ft. ■ 2 Bedroom, 2 Bath



Scan the above QR code with your phone to view a video walkthrough of a similar Villa floorplan, or go to [YouTube.com/JohnKnoxVillage](https://www.youtube.com/JohnKnoxVillage).

FY26 – Phase 13. *Photos shown are for illustrative purposes only. Actual finishes may differ from those shown.



Swing by for a visit to experience John Knox Village for yourself.
Visit www.jkv.org, or call 816-251-8000 to learn more.



■ 1909 N.W. Killarney Lane

1,438 Sq. Ft. ■ 2 Bedroom, 2 Bath

PREMIER KITCHEN

- Hard surface countertops
- GE® stainless steel appliances
- Smooth cooktop
- Microwave and pantry
- Undermount granite composite sink

JUST THE RIGHT FINISHING TOUCHES

- Hardwood floors in kitchen and dining room
- Porcelain tile bathroom
- Primary double vanity
- Primary walk-in closet
- Andersen® windows

EXTRAS YOU'LL LOVE

- Gas log fireplace
- Zero entry shower
- Custom cabinets with roll-out shelves
- Raised panel doors
- 9-foot ceilings
- Basement for additional storage

*Photos/videos shown are for illustrative purposes only. Actual finishes may differ from those shown.



Swing by for a visit to experience John Knox Village for yourself.
Visit www.jkv.org, or call 816-251-8000 to learn more.



KILLARNEY VILLA

1909 N.W. Killarney - 1,438 Square Feet

2 Bedroom Villa



1 Person

Contract Type	Entrance Fee	Monthly Fee
50% - 50% Plan	\$567,000	\$4,252
Garage Fees	*\$7,589	
TOTAL	\$574,589	\$4,252

80% - 50% Plan	\$754,110	\$4,252
Garage Fees	*\$7,589	
TOTAL	\$761,699	\$4,252

80% - 20% Plan	\$612,360	\$4,252
Garage Fees	*\$7,589	
TOTAL	\$619,949	\$4,252

0% - 50% Mix	\$612,360	\$2,636
Garage Fees	*\$7,589	
TOTAL	\$619,949	\$2,636

2 Person

Contract Type	Entrance Fee	Monthly Fee
50% - 50% Plan	\$567,000	\$4,252
2nd Person Fee	*\$54,797	\$713
Garage Fees	*\$7,589	
TOTAL	\$629,386	\$4,965

80% - 50% Plan	\$754,110	\$4,252
2nd Person Fee	*\$54,797	\$713
Garage Fees	*\$7,589	
TOTAL	\$816,496	\$4,965

80% - 20% Plan	\$612,360	\$4,252
2nd Person	*\$38,906	\$713
Garage Fees	*\$7,589	
TOTAL	\$658,855	\$4,965

0% - 50% Mix	\$612,360	\$2,636
2nd Person Fee	*\$54,797	\$713
Garage Fees	*\$7,589	
TOTAL	\$674,746	\$3,349



*2nd Person Entrance Fee and Garage Fee are Non-Refundable
Prices are subject to change without notice.